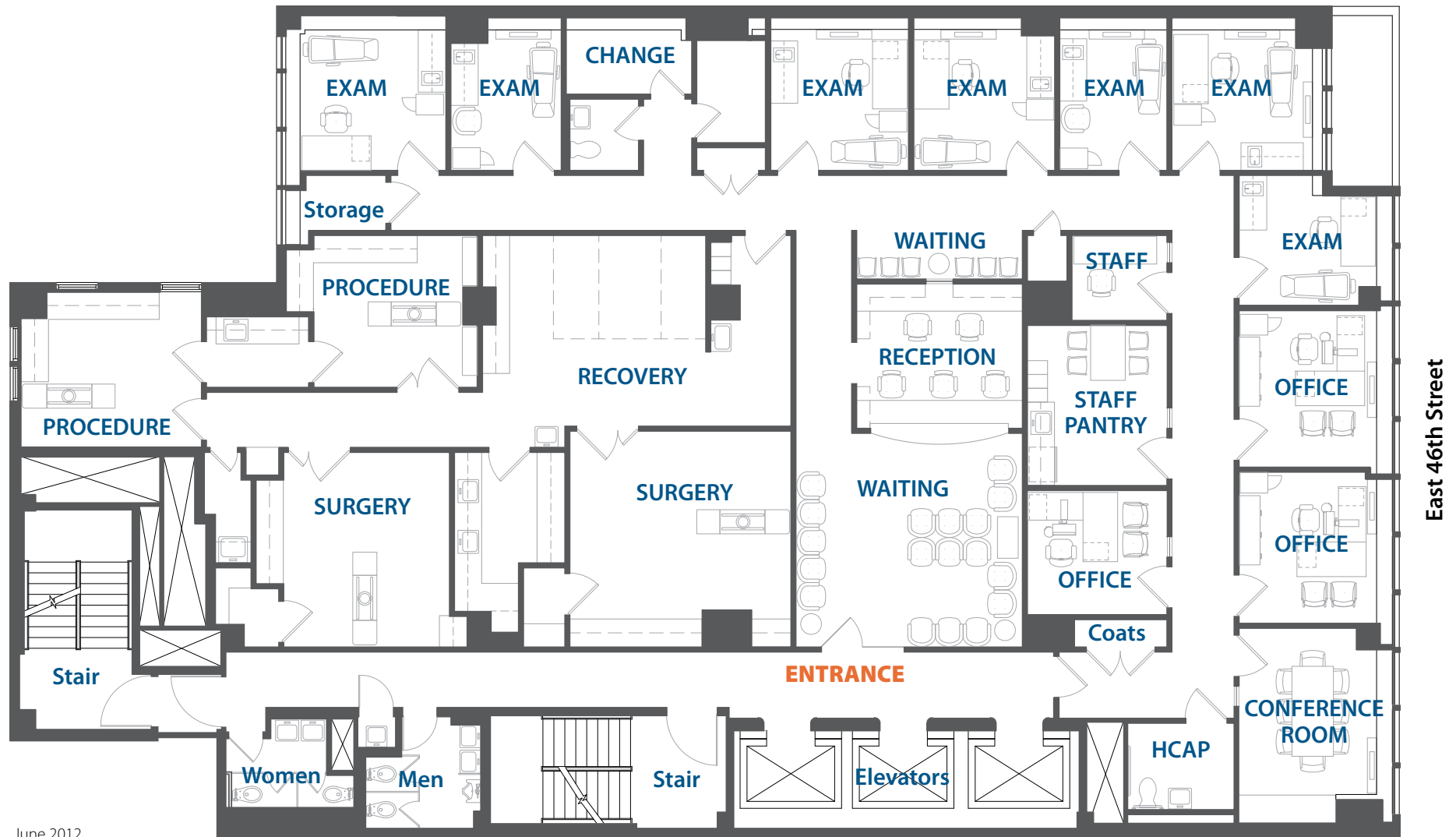


# MedicalOne New York ...at a glance

- ❖ Our innovative facility for multi-specialty, out-patient surgical and cosmetic physician services spans 7,000 sq. ft.
- ❖ Our knowledgeable, care-centered team manages the latest in online and admin. technology in an EMR environment.
- ❖ Strategically located near Grand Central Station, step-off 9th floor elevators directly into Medical One.
- ❖ Learn about all time-saving features and take a tour at a convenient time... call Rose Marie Phillip, MD: **646.490.5475** or **rmphillip@medicaloneny.com**



June 2012